

# Hotel Financial Software

A Solution for Hospitality

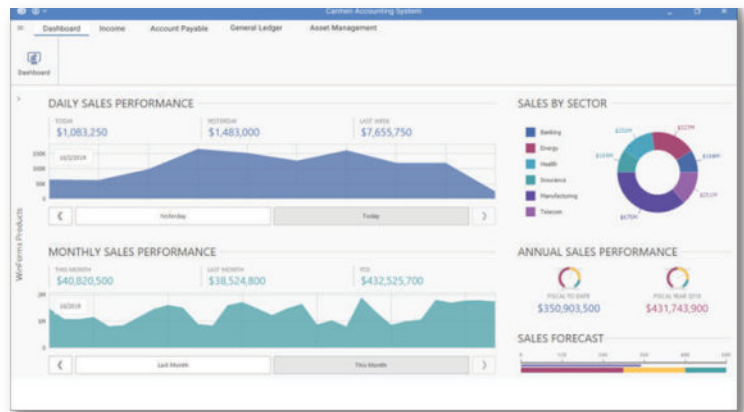


Carmen Hotel Accounting System

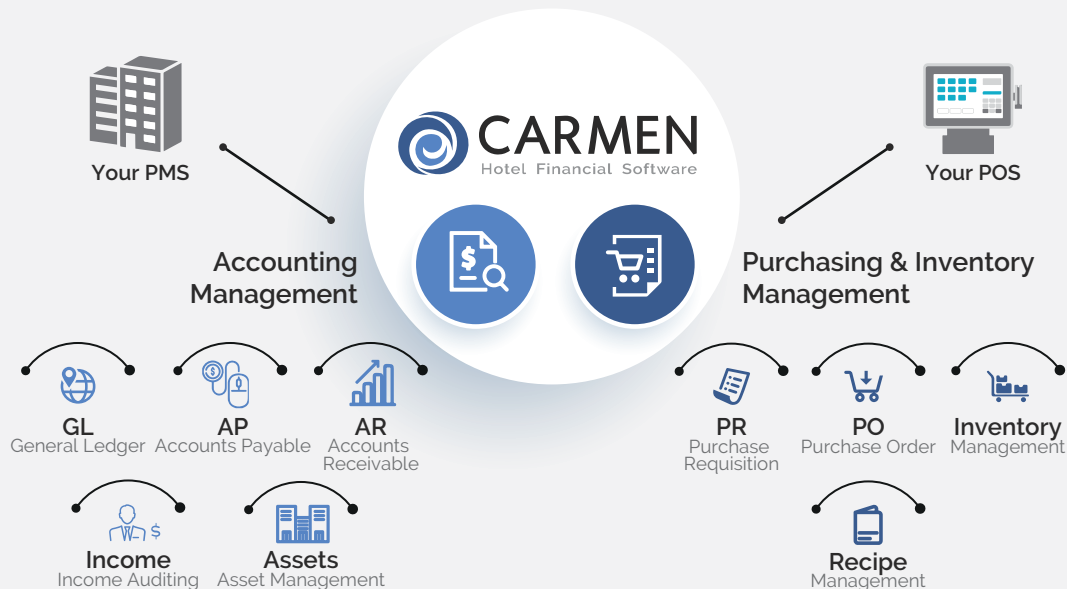
## focus

Building standard processes and data retrieval for ease of implementation and usage. Provides a consistent end user experience that is repeated across all applications.

Implements industry best practices to help reduce user workload and optimize vital resources, while still remaining very flexible.



## Carmen Solutions



## Carmen Hotel Financial Software was designed by experienced Financial Controllers from the hospitality industry.



### Dashboard

Mobile accessible dashboards providing live data statistics to assist in better business decisions.



### Business Intelligence (BI)

Ready to connect to BI tools. Easily and quickly create beautiful reports with all data that you need for enterprise wide analytics in a glance.



### Data Analytic

Up to 10 analytic dimensions per transaction, permitting a better view of the business and providing powerful analytics on transaction and accounts.



### Excel Integration

Connection with your MS Excel spreadsheets for improved and flexible reporting and eliminate manual data entry.



### On Premise Hybris

The Hybris, cloud edition, provides a flexible platform and allows for full omni-channel capabilities in a private cloud.



### PMS API ready

By interfacing with the PMS via the API, all accounting data can be extracted and imported respecting Business logic rules.

## Income Auditing Module

The Ability to Control

Compatible with Internationally Accepted Property Management Systems (PMS) such as

- o Opera
- o Hotelogix
- o Guestline
- o IQware
- o Info Starlight
- o Protel
- o Fidelio
- o HMS & More...

### Easy Reconciliation with PMS Income Summary

Provides an easy reconciliation point to support daily tasks by matching the comparable reports in both systems.

Automatically Updates Department Code or Transaction Code

Once the PMS has created a new transaction code, the Income Module will automatically create a new category to conform with the PMS system's revenue configuration..

### Daily, Monthly and Yearly Guest Ledger Tracking

With Carmen's unique posting feature, it automatically compares revenue transaction with Guest Ledger, ensuring accuracy of the Guest Ledger number.

## Account Payable Module

Workload Optimization

### Complete Vendor Information

Vendor profile information can be configured and preset to automatically be assigned in related transactions, such as Tax Code, Rate, Credit Term, Payment Type, Account Code, etc.

### Full Control of Vendor Settlement

Complete control over selection of invoices for full or partial payments. Handles withholding tax with more than one rate per transaction in full or partial payment. Option to recognize transaction by Payment Date, Cheque Date or Clearing Date.

### E-Tax Online Submitting

Available for Thailand and can be adjusted for other countries – PND 2, 3 53 export to specific file format for submitting to revenue department website. More reference information fields added into withholding tax entry screen

### Bank Transfer Integration

Integration to most banks, helps streamline vendor payment process. Batch Payment file can be customized to comply with all local or international Banks requirements.

### Vendor Invoice Handling

Recurring invoices can be set to generate automatically and without manual entry. This automation saves time and ensures accuracy. The detailed invoices include; Complete Invoice information, detailing Invoice Date, Transaction Date, Tax Invoice Date, Reference Numbers, Description, Comments etc.

### Localize Purchase Tax

International standards of operation, with localized taxation, including VAT and Withholding Tax procedures and mandatory reports and forms. Input Tax Management ensure complete tracking and maintenance of tax invoices with various status references. Automatically reverse transaction Input Tax Pending to Input Tax Payment.

### Cheque Reconciliation

By importing your bank transaction, Carmen verifies that the amounts on the bank statements are consistent and match with the amounts in the company's Accounts. The analysis will outline any discrepancies and you can choose to simply confirm what Carmen suggests. Keeps the check register update and manages cash outflow using standard procedures and flexible reporting.

## Accounting Receivable

Take over the City Ledger account directly from inflexible PMS system receivable function.

- Full Functions for City Ledger Management
- Retroactive Aging Report
- PMS Integration
- Flexible Invoice and Statement Delivery
- Recurring billing
- Credit Card Reconciliation Process

## General Ledger Module

Enhance Internal Controls and Auditability

### Connect MS Excel to your accounting

Gives you the power to create unlimited financial reporting templates. Empowers you to manage all aspects of each cost center with a full set of automated tools.

Generate a consolidated Balance Sheet, Trial Balance or Profit & Loss over multiple periods for your group.

Improve reporting and data entry makes it easy to transform data downloaded from Carmen into reports & to upload entries in bulk using MS Excel.

### Journal Voucher

Unlimited Ledger predefined by user allows to organize various vouchers more efficiently and makes it easy to control and track back.

Transaction templates save time and prevent mistakes when entering manual journal entries.

Ensure accuracy and efficiency with a function for automatic creation of accounting entries based on the predefined parameters for recurring voucher. To easily recreate frequent transactions, simply use Copy and Reverse voucher function, saving time and money.

### Budgeting

Enhance Internal Controls & Auditability

#### 1 + 4 Revisions of Budget

Quickly create full income statements, balance sheets and cash flow statement

## Asset Register

Gives the wide view of Asset status and locations.

Purchase Order integration. Convert purchases into fixed assets without re-entering data.

Batch registration corresponding to individual item variation information tracking such as serial number, location and specification.

Barcode or QR code label printed and scans enable you to track your equipment across locations.

## Inventory

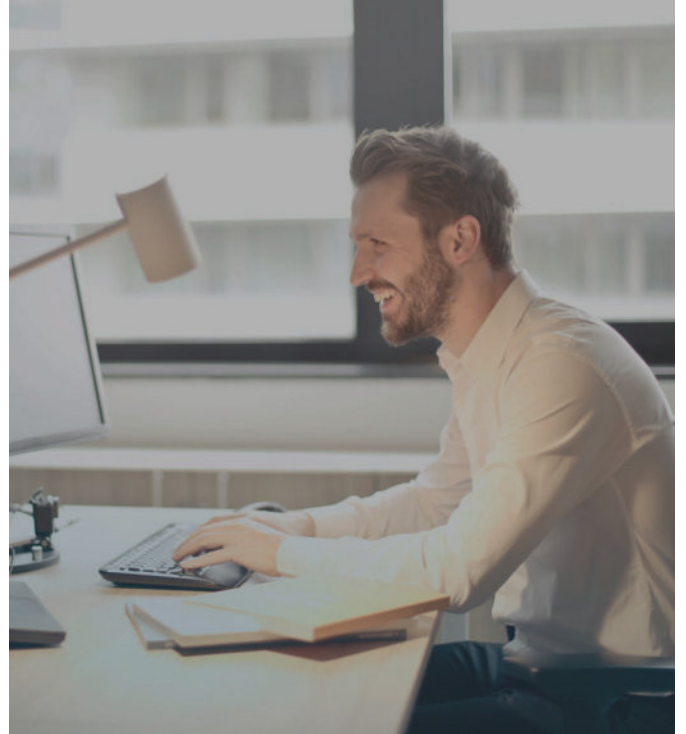
Control and manage your items efficiently and without losing track of costs with a system-wide inventory management tool.

- Multiple Valuation Methods
- Item unit
- Stock request item issue/transfer
- Physical Stock Count
- Manage Cost

## F&B Recipe

Manage recipe and ingredients to ensure standard recipe data, optimized food costing management.

- Recipe Costing
- Sub-Recipe
- POS Connect



## Financial Report

Multi Business – Consolidate Financial Statements.

### Profit Centers Reports

Displays a managerial Profit and Loss report for each profit/cost center, based on all its revenues and expenses, direct and indirect. You can choose a display of yearly or monthly formats and compare it with last year's figures and budgeting figures. Operation Statistic Numbers, such as; room occupancy, average room rate, etc. can be displayed directly in the operation financial report.

### Daily Management Report

MS Excel integration tool allows you to customize the format of daily revenue reports and access to standard daily revenue report. Daily Revenue report can be grouped by account or in details with daily breakdown, monthly or yearly budget comparison.



## Purchasing

Streamline your procurement process.

- Simple Standard workflow built-in along requisition process.
- Landed Cost Functionality



# Some of Our Customers



- Best Western Ahlone Yangon, Myanmar
- Emerald Palace Hotel, Myanmar
- Jasmine Palace Hotel, Myanmar
- Jasmine Ngapali Resort, Myanmar
- Residence@26, Myanmar
- Outrigger Konotta Maldives Resort, Maldives
- Parasol Blanc Hotel, Laos
- The Royal Sands Koh Rong Resort, Cambodia
- Zest Jemursari, Surabaya by Swiss-Belhotel, Indonesia
- Song Saa Private Island, Cambodia
- Swiss-belhotel, Indonesia
- Villa Maly Hotel, Laos
- Surabaya, Philippines
- Zest Hotel Bandung (ZHBA), Indonesia
- Zest Hotel Bali, Indonesia

Anantara Villa Lawana  
 Ayara Hilltops Boutique Resort  
 Bandara Suites Silom, Bangkok  
 Bandara Resort & Spa Samui  
 Bandara Phuket Beach Resort  
 Namaka Resort Kamala  
 Buri Rasa Village | Luxury Boutique Resort  
 Beach Republic, Koh Samui Resort  
 Beyond Resort Krabi  
 Beyond Resort Kata  
 Beyond Resort Karon  
 Beyond Resort Khao Lak  
 Beyond Patong

Apsara Beachfront Resort and Villa  
 Deevana Patong Resort  
 Deevana Plaza Phuket Patong  
 Deevana Krabi Resort  
 Deevana plaza , Krabi Aonang  
 Chava Resort  
 Evason Hua Hin Resort & Spa  
 Craft Resort & Villas  
 Cher resort  
 SENTIDO Graceland Khao Lak Res  
 Ramada Resort Khaolak  
 Khaolak Laguna Resort  
 Khao Lak Emerald Beach Resort  
 Khaolak Bhandari Resort & Spa

Pullman Pattaya Hotel G  
 Khaolak Oriental Hotel  
 Moracea by Khao Lak Resort  
 Kirikayan Luxury Pool Villas  
 Kirikayan Boutique  
 Katiliya Mountain Resort & Spa  
 The Kala Samui Resort  
 KC Resort & Over Water Villas  
 Outrigger Koh Samui Beach Resort  
 Mandarava Resort & Spa  
 The Bangkok Club  
 The Briza Beach Resort  
 The Charm Resort Phuket  
 Rocky's Boutique Resort

The SLATE  
 The Pavilions Phuket  
 The Mangrove Resort, Panwa  
 Nora Chaweng City Hotel  
 Nora Buri Resort & Spa  
 Nora Beach Resort & Spa  
 Sampran Riverside  
 Sampran Riverside (Thaivillage)  
 Parasol Blanc Hotel  
 Veranda Resort  
 Veranda High Resort Chiang mai  
 Veranda Resort Pattaya  
 Veranda Cuisine  
 The Twin Towers Hotel





[www.carmensoftware.com](http://www.carmensoftware.com)

t. +662 284 0429 | e. [support@carmensoftware.com](mailto:support@carmensoftware.com)

